



KMS Ag Consulting

Sample 596-020824-035

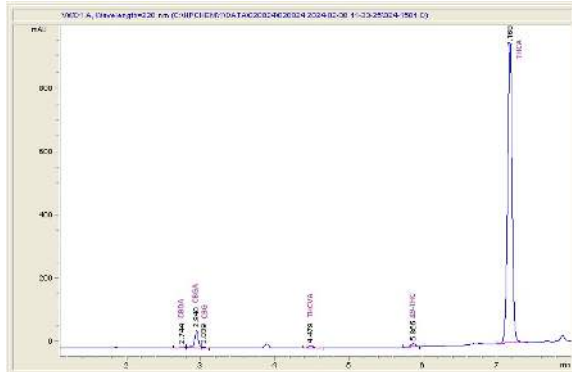
Cap Junkie

Sample Submitted: 02-08-2024; Report Date: 02-13-2024

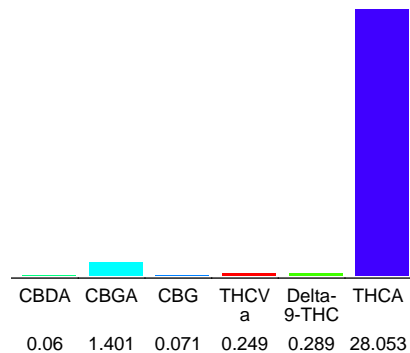
## Cap Junkie

Plant Material: Hemp Flower

### Chromatogram



### Cannabinoid Profile



### Cannabinoid Profile by HPLC

**0.29%**  
Delta-9-THC

**0.00%**  
CBD

**30.12%**  
Total Cannabinoids

Cannabinoid	% wt	mg/g
CBDA	0.06	0.6
CBGA	1.401	14.01
CBG	0.071	0.71
THCVa	0.249	2.49
Delta-9-THC	0.289	2.89
THCA	28.05	280.53
<b>Total Cannabinoids</b>	<b>30.12</b>	<b>301.2</b>
<b>Calculated Total THC</b>	<b>24.89</b>	<b>248.91</b>
<b>Calculated CBD Yield</b>	<b>0.05</b>	<b>0.53</b>

Calculated Total THC = Delta-9-THC + 0.877 \* THCA

Calculated Maximum CBD Yield = CBD + 0.877 \* CBDA

**Marin Analytics, LLC**  
250 Bel Marin Keys Blvd, Suite D4  
Novato, CA 94949

833-321-TEST / info@marinanalytics.com

**Mike Clemmons**  
Lab Manager