



### Purple Hindu Kush d8 flower

Sample ID: G3L0092-08

Matrix: Industrial Hemp

Test ID: 5025697

Source ID:

Date Sampled: 12/07/23

Date Accepted: 12/07/23

Batch Lot ID: PK12-1-23

Harvest/Prod. Date: 12.01.2023

**KMS Ag Consulting**  
kyle@discountpharms.com

### Results at a Glance

Total THC : 0.06781 %

Total CBD : 7.094 %

Total CBG : 1.791 %

delta 8-THC : 14.13 % **PASS**



**ISO 17025**  
ACCREDITED  
LABORATORY

Eric Wendt  
Chief Science Officer - 12/8/2023

These results relate only to the sample included on this report. The report may not be reproduced except in full, without the written permission of Green Leaf Lab.

This is for informational testing and is not compliance testing. Lab results apply to the sample as received.



### Purple Hindu Kush d8 flower

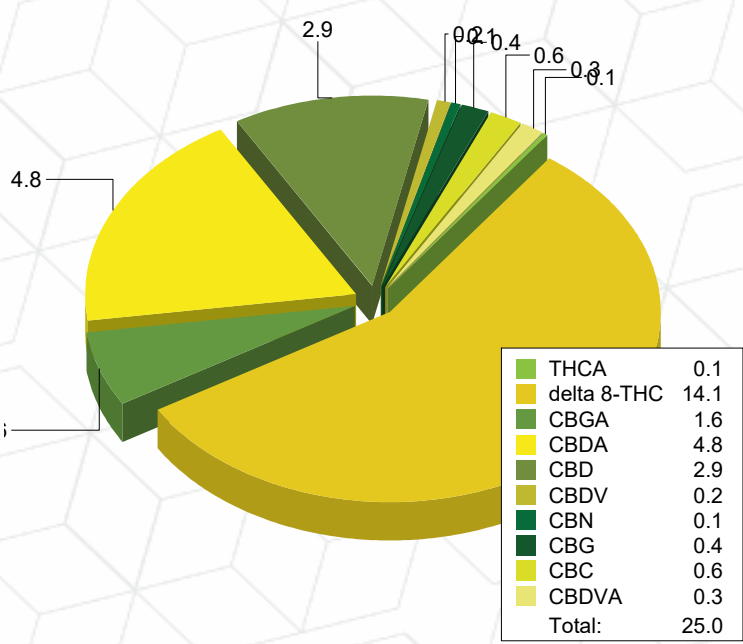
Sample ID: G3L0092-08 Matrix: Industrial Hemp  
Test ID: 5025697  
Source ID:  
Date Sampled: 12/07/23 Date Accepted: 12/07/23  
Batch Lot ID: PK12-1-23  
Harvest/Prod. Date: 12.01.2023

**KMS Ag Consulting**  
kyle@discountpharms.com

### Potency Analysis


Date/Time Extracted: 12/07/23 09:27 Analysis Method/SOP: 215 Batch Identification: 2349060

Cannabinoids	LOQ (%)	% by Wt.	mg/g	Cannabinoids Profile	
Total THC	0.009080	0.06781	0.6781		
Total CBD	0.002075	7.094	70.94		
Total CBG	7.900E-4	1.791	17.91		
THCA	5.000E-4	0.07732	0.7732		
delta 9-THC	5.000E-4	< LOQ	< LOQ		
delta 8-THC	0.01796	14.13	141.3	4.8	
THCV	0.005055	< LOQ	< LOQ		
THCVA	0.001885	< LOQ	< LOQ		
CBD	5.000E-4	2.922	29.22	2.9	
CBDA	5.000E-4	4.758	47.58		
CBDV	0.005000	0.1774	1.774		
CBDVA	0.001640	0.3142	3.142		
CBN	0.002990	0.1168	1.168		
CBG	7.900E-4	0.4057	4.057		
CBGA	7.900E-4	1.577	15.77		
CBC	0.008965	0.5519	5.519		



Total THC = delta 9-THC + (THCA \* 0.877)  
Total CBD = CBD + (CBDA \* 0.877)  
Total CBG = CBG + (CBGA \* 0.878)  
LOQ=Limit of Quantification, the lowest measurable concentration of an analyte.  
THCA, delta 9-THC, delta 8-THC, CBDA and CBD are accredited by TNI 2016 and ISO 17025



  
Eric Wendt  
Chief Science Officer - 12/8/2023

These results relate only to the sample included on this report. The report may not be reproduced except in full, without the written permission of Green Leaf Lab.

This is for informational testing and is not compliance testing. Lab results apply to the sample as received.



### Quality Control Potency

Batch: 2349060 - 215-Hemp

Blank(2349060-BLK1)							
Analyte	Result	LOQ	Units	%Recovery Limits	Extracted	Analyzed	Notes
THCA	< LOQ	5.000E-4	%		12/07/23 09:27	12/08/23 05:06	
delta 9-THC	< LOQ	5.000E-4	%		12/07/23 09:27	12/08/23 05:06	
delta 8-THC	< LOQ	0.004490	%		12/07/23 09:27	12/08/23 05:06	
THCV	< LOQ	0.005055	%		12/07/23 09:27	12/08/23 05:06	
THCVA	< LOQ	0.001885	%		12/07/23 09:27	12/08/23 05:06	
CBD	< LOQ	5.000E-4	%		12/07/23 09:27	12/08/23 05:06	
CBDA	< LOQ	5.000E-4	%		12/07/23 09:27	12/08/23 05:06	
CBDV	< LOQ	0.005000	%		12/07/23 09:27	12/08/23 05:06	
CBDVA	< LOQ	0.001640	%		12/07/23 09:27	12/08/23 05:06	
CBN	< LOQ	0.002990	%		12/07/23 09:27	12/08/23 05:06	
CBG	< LOQ	7.900E-4	%		12/07/23 09:27	12/08/23 05:06	
CBGA	< LOQ	7.900E-4	%		12/07/23 09:27	12/08/23 05:06	
CBC	< LOQ	0.008965	%		12/07/23 09:27	12/08/23 05:06	

Reference(2349060-SRM1)							
Analyte	% Recovery	LOQ	Units	%Recovery Limits	Extracted	Analyzed	Notes
THCA	90.9	5.000E-4	%	90-110	12/07/23 09:27	12/08/23 05:29	
delta 9-THC	92.3	5.000E-4	%	90-110	12/07/23 09:27	12/08/23 05:29	
delta 8-THC	101	0.004490	%	90-110	12/07/23 09:27	12/08/23 05:29	
CBD	109	5.000E-4	%	90-110	12/07/23 09:27	12/08/23 05:29	
CBDA	98.4	5.000E-4	%	90-110	12/07/23 09:27	12/08/23 05:29	



Eric Wendt  
Chief Science Officer - 12/8/2023

These results relate only to the sample included on this report. The report may not be reproduced except in full, without the written permission of Green Leaf Lab.

This is for informational testing and is not compliance testing. Lab results apply to the sample as received.



### Notes and Definitions

Regulatory Compliance samples were collected onsite at facility according to SOP-402 and SOP-403 and following Sampling Plan FN117. Quality Control samples were tested as received. Results do not include uncertainty of measurements. Available upon request.

- ATM Non-cannabis matrix related interference or suppression of Internal standard
  - BLI Baseline Interference - Cannabinoid peak interference in chromatographic baseline affecting QC recovery .
  - BLK Analyte detected in method blank, but not associated samples.
  - BSH Blank Spike High - Blank Spike recovery above method limit. no detections in samples.
  - BSL Blank Spike Low - Blank Spike recovery below lower method limit, analyte chromatography reviewed manually for all samples.
  - CBD Interference due to co-elution
  - CV1 CBD matrix interference on GC Pest chromatography
  - CV2 CCV was above acceptance criteria, Non-detect samples are considered acceptable.
  - INF CCV was below acceptance criteria, sample still exceeds regulatory limit.
  - ISH One or more QC falls outside acceptance criteria. Data entered into LIMS for informational purposes only.
  - ISL Internal Standard concentration is above acceptance criteria.
  - MSH Internal Standard concentration is below acceptance criteria.
  - MSI Matrix Spike High - Matrix Spike recovery above method limits.
  - MSL Matrix Spike Interference - Matrix spike source sample contains analyte hit above calibration affecting recovery accuracy in Matrix Spike.
  - TPP
  - U Matrix Spike Low - Matrix Spike recovery below lower method limit, analyte chromatography reviewed manually for all samples.
- Internal Standard concentration outside control limit due to matrix interference



Eric Wendt  
Chief Science Officer - 12/8/2023

These results relate only to the sample included on this report. The report may not be reproduced except in full, without the written permission of Green Leaf Lab.

This is for informational testing and is not compliance testing. Lab results apply to the sample as received.