



### Forbidden Fruit D8 Flower

Sample ID: G4B0269-11 Matrix: Industrial Hemp

Test ID: 5026679

Source ID: FF21524

Date Sampled: 02/19/24 Date Accepted: 02/19/24

Harvest/Prod. Date: 02.15.2024

**Discountpharms**  
kyle@discountpharms.com

### Results at a Glance

Total THC : 0.1203 %

Total CBD : 10.88 %

Total CBG : 6.472 %



**ISO 17025**  
ACCREDITED  
LABORATORY

Nolan Mundie  
Lab Director - 2/29/2024

These results relate only to the sample included on this report. The report may not be reproduced except in full, without the written permission of Green Leaf Lab.

This is for informational testing and is not compliance testing. Lab results apply to the sample as received.



### Forbidden Fruit D8 Flower

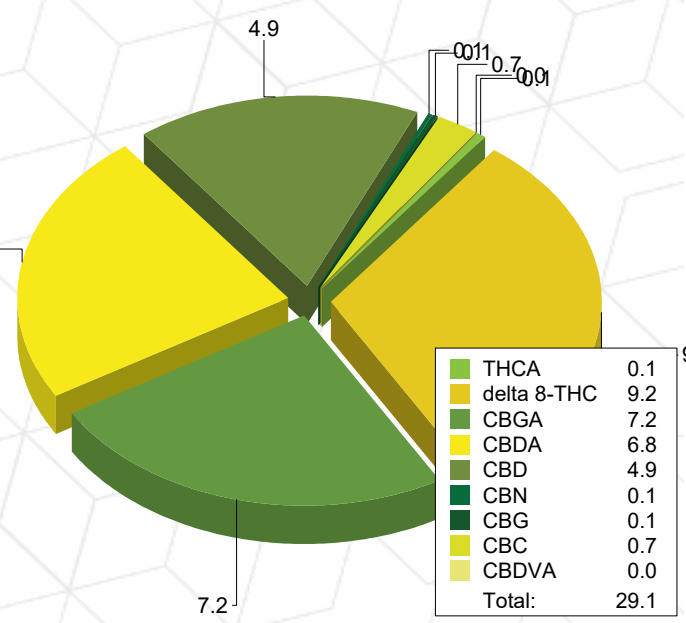
Sample ID: G4B0269-11 Matrix: Industrial Hemp  
Test ID: 5026679  
Source ID: FF21524  
Date Sampled: 02/19/24 Date Accepted: 02/19/24  
Harvest/Prod. Date: 02.15.2024

**Discountpharms**  
kyle@discountpharms.com

### Potency Analysis

Date/Time Extracted: 02/21/24 13:01 Analysis Method/SOP: 215 Batch Identification: 2408046

Cannabinoids	LOQ (%)	% by Wt.	mg/g	Cannabinoids Profile	
Total THC	0.009080	0.1203	1.203		
Total CBD	0.008300	10.88	108.8		
Total CBG	0.003160	6.472	64.72		
THCA	5.000E-4	0.1371	1.371		
delta 9-THC	5.000E-4	< LOQ	< LOQ		
delta 8-THC	0.01796	9.164	91.64		
THCV	0.005055	< LOQ	< LOQ		
THCVA	0.001885	< LOQ	< LOQ		
CBD	0.002000	4.919	49.19		
CBDA	0.002000	6.799	67.99		
CBDV	0.005000	< LOQ	< LOQ		
CBDVA	0.001640	0.03318	0.3318		
CBN	0.002990	0.07775	0.7775		
CBG	0.003160	0.1442	1.442		
CBGA	0.003160	7.207	72.07		
CBC	0.008965	0.6623	6.623		



Total THC = delta 9-THC + (THCA \* 0.877)  
Total CBD = CBD + (CBDA \* 0.877)  
Total CBG = CBG + (CBGA \* 0.878)  
LOQ=Limit of Quantification, the lowest measurable concentration of an analyte.  
THCA, delta 9-THC, delta 8-THC, CBDA and CBD are accredited by TNI 2016 and ISO 17025



*Nolan Mundie*  
Nolan Mundie  
Lab Director - 2/29/2024

These results relate only to the sample included on this report. The report may not be reproduced except in full, without the written permission of Green Leaf Lab.  
This is for informational testing and is not compliance testing. Lab results apply to the sample as received.



### Quality Control Potency

Batch: 2408046 - 215-Hemp

Blank(2408046-BLK1)							
Analyte	Result	LOQ	Units	%Recovery Limits	Extracted	Analyzed	Notes
THCA	< LOQ	5.000E-4	%		02/21/24 13:01	02/22/24 00:13	
delta 9-THC	< LOQ	5.000E-4	%		02/21/24 13:01	02/22/24 00:13	
delta 8-THC	< LOQ	0.004490	%		02/21/24 13:01	02/22/24 00:13	
THCV	< LOQ	0.005055	%		02/21/24 13:01	02/22/24 00:13	
THCVA	< LOQ	0.001885	%		02/21/24 13:01	02/22/24 00:13	
CBD	< LOQ	5.000E-4	%		02/21/24 13:01	02/22/24 00:13	
CBDA	< LOQ	5.000E-4	%		02/21/24 13:01	02/22/24 00:13	
CBDV	< LOQ	0.005000	%		02/21/24 13:01	02/22/24 00:13	
CBDVA	< LOQ	0.001640	%		02/21/24 13:01	02/22/24 00:13	
CBN	< LOQ	0.002990	%		02/21/24 13:01	02/22/24 00:13	
CBG	< LOQ	7.900E-4	%		02/21/24 13:01	02/22/24 00:13	
CBGA	< LOQ	7.900E-4	%		02/21/24 13:01	02/22/24 00:13	
CBC	< LOQ	0.008965	%		02/21/24 13:01	02/22/24 00:13	

Reference(2408046-SRM1)							
Analyte	% Recovery	LOQ	Units	%Recovery Limits	Extracted	Analyzed	Notes
THCA	100	5.000E-4	%	90-110	02/21/24 13:01	02/22/24 00:35	
delta 9-THC	105	5.000E-4	%	90-110	02/21/24 13:01	02/22/24 00:35	
delta 8-THC	99.7	0.004490	%	90-110	02/21/24 13:01	02/22/24 00:35	
CBD	99.7	5.000E-4	%	90-110	02/21/24 13:01	02/22/24 00:35	
CBDA	96.9	5.000E-4	%	90-110	02/21/24 13:01	02/22/24 00:35	



Nolan Mundie  
Lab Director - 2/29/2024

These results relate only to the sample included on this report. The report may not be reproduced except in full, without the written permission of Green Leaf Lab.

This is for informational testing and is not compliance testing. Lab results apply to the sample as received.



### Notes and Definitions

Regulatory Compliance samples were collected onsite at facility according to SOP-402 and SOP-403 and following Sampling Plan FN117. Quality Control samples were tested as received. Results do not include uncertainty of measurements. Available upon request.

- ATM Non-cannabis matrix related interference or suppression of Internal standard
- BLI Baseline Interference - Cannabinoid peak interference in chromatographic baseline affecting QC recovery .
- BLK Analyte detected in method blank, but not associated samples.
- BSH Blank Spike High - Blank Spike recovery above method limit. no detections in samples.
- BSL Blank Spike Low - Blank Spike recovery below lower method limit, analyte chromatography reviewed manually for all samples.
- CBD Interference due to co-elution
- CV1 CBD matrix interference on GC Pest chromatography
- CV2 CCV was above acceptance criteria, Non-detect samples are considered acceptable.
- INF CCV was below acceptance criteria, sample still exceeds regulatory limit.
- ISH One or more QC falls outside acceptance criteria. Data entered into LIMS for informational purposes only.
- ISL Internal Standard concentration is above acceptance criteria.
- MSH Internal Standard concentration is below acceptance criteria.
- MSI Matrix Spike High - Matrix Spike recovery above method limits.
- MSL Matrix Spike Interference - Matrix spike source sample contains analyte hit above calibration affecting recovery accuracy in Matrix Spike.
- TPP
- U Matrix Spike Low - Matrix Spike recovery below lower method limit, analyte chromatography reviewed manually for all samples.  
Internal Standard concentration outside control limit due to matrix interference



Nolan Mundie  
Lab Director - 2/29/2024

These results relate only to the sample included on this report. The report may not be reproduced except in full, without the written permission of Green Leaf Lab.

This is for informational testing and is not compliance testing. Lab results apply to the sample as received.