

Green Diamond Group

Sample 596-082124-217

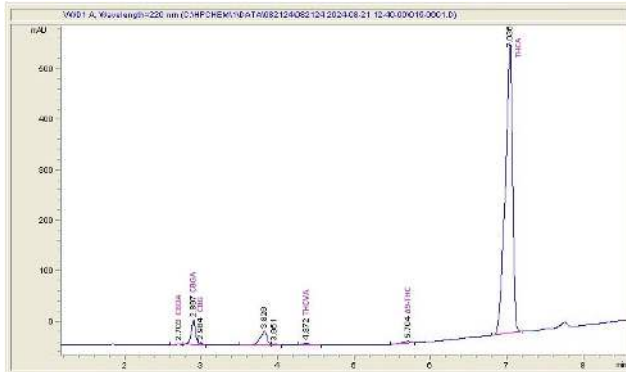
Gorilla Glue

Sample Submitted: 08-21-2024; Report Date: 08-22-2024

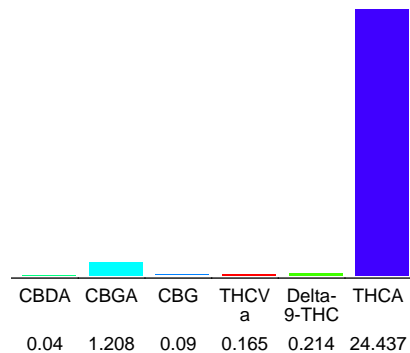
## Gorilla Glue

Plant Material: Hemp Flower

### Chromatogram



### Cannabinoid Profile



### Cannabinoid Profile by HPLC

**0.21%**

Delta-9-THC

**0.00%**

CBD

**26.15%**

Total Cannabinoids

| Cannabinoid                 | % wt         | mg/g          |
|-----------------------------|--------------|---------------|
| CBDA                        | 0.04         | 0.4           |
| CBGA                        | 1.208        | 12.08         |
| CBG                         | 0.09         | 0.9           |
| THCVa                       | 0.165        | 1.65          |
| Delta-9-THC                 | 0.214        | 2.14          |
| THCA                        | 24.44        | 244.37        |
| <b>Total Cannabinoids</b>   | <b>26.15</b> | <b>261.5</b>  |
| <b>Calculated Total THC</b> | <b>21.65</b> | <b>216.45</b> |
| <b>Calculated CBD Yield</b> | <b>0.04</b>  | <b>0.35</b>   |

Calculated Total THC = Delta-9-THC + 0.877 \* THCA

Calculated Maximum CBD Yield = CBD + 0.877 \* CBDA

#### Marin Analytics, LLC

250 Bel Marin Keys Blvd, Suite D4  
Novato, CA 94949

833-321-TEST / info@marinanalytics.com



**Mike Clemmons**  
Lab Manager