

REPORT PREPARED FOR:

KMS AG Consulting

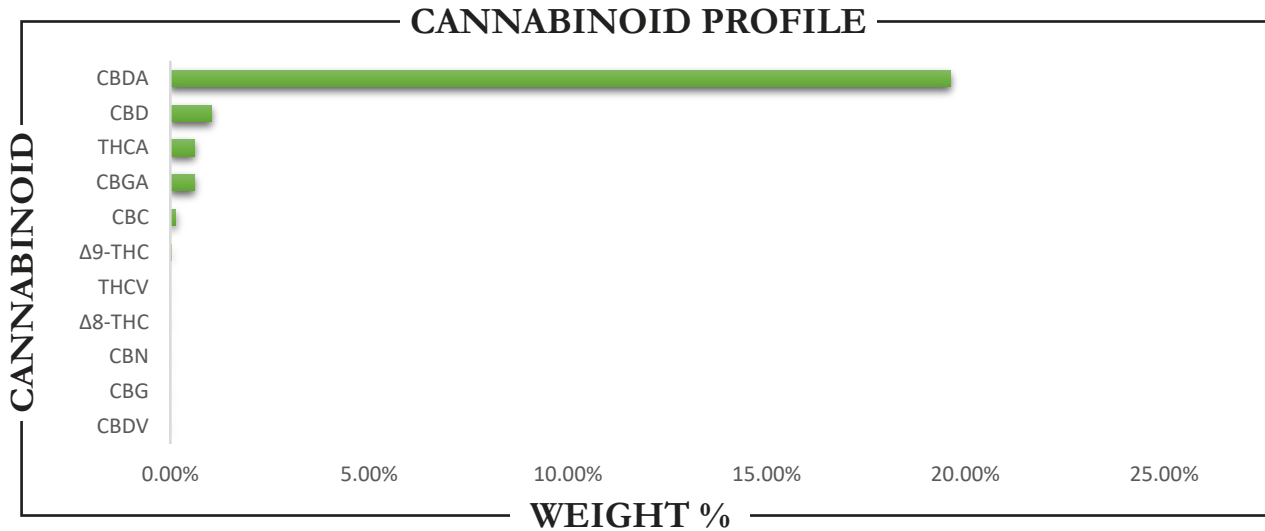
PROJECT# 25000821
LAB ID 55001883
REPORT DATE 12/13/2024



SAMPLE NAME: Felix OG CBD Flower

DATE RECEIVED: 12/12/2024

$\Delta 9$ -THC	TOTAL CBD	TOTAL CANNABINOIDS
0.02%	18.25%	22.01%



CANNABINOID	WEIGHT (%)	MG/G
CBC	0.12	1.21
CBD	1.04	10.44
CBDA	19.61	196.15
CBDV	ND	ND
CBG	ND	ND
CBGA	0.60	6.01
CBN	ND	ND
$\Delta 8$ -THC	ND	ND
$\Delta 9$ -THC	0.02	0.23
THCA	0.61	6.06
THCV	ND	ND
Total CBD	18.25	182.47
Total CBG	0.53	5.27
Total THC	0.55	5.55

Analysis Method: TP-POT-05
By HPLC-VWD
Total THC = (0.877 x THCA) + $\Delta 9$ -THC
Total CBD = (0.877 x CBDA) + CBD
Total CBG = (0.877 x CBGA) + CBG
ND = Not Detected

Prepared By: TJS
Prep Date: 12/13/2024
Batch ID: DEC1324A-POT

Analyzed By: TJS
Analysis Date: 12/13/2024



APPROVED BY:
JUSTIN HALL
LAB DIRECTOR

Justin Hall
SIGNATURE

12/13/2024
SIGNED ON